

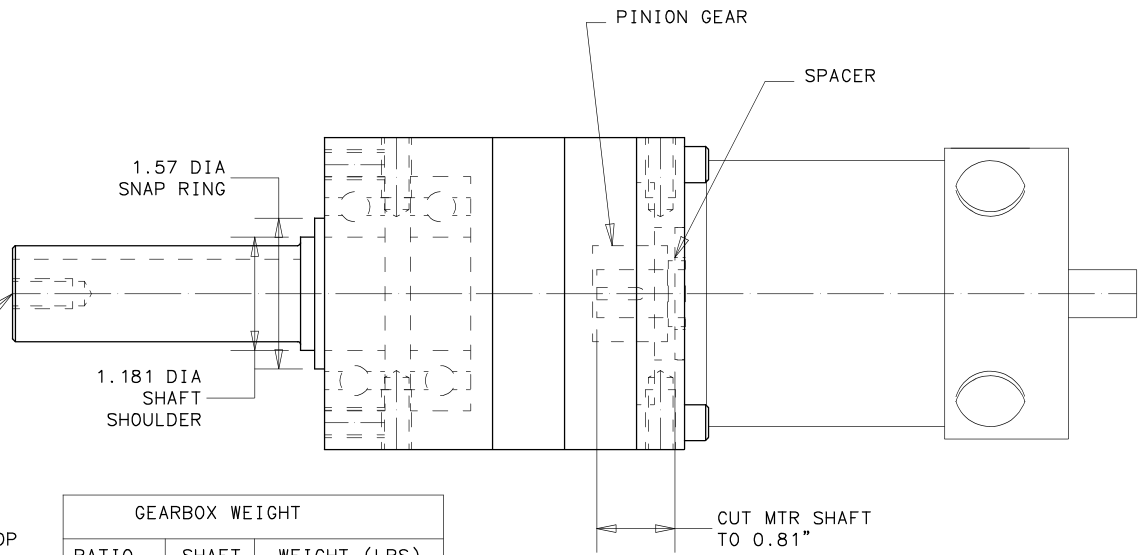
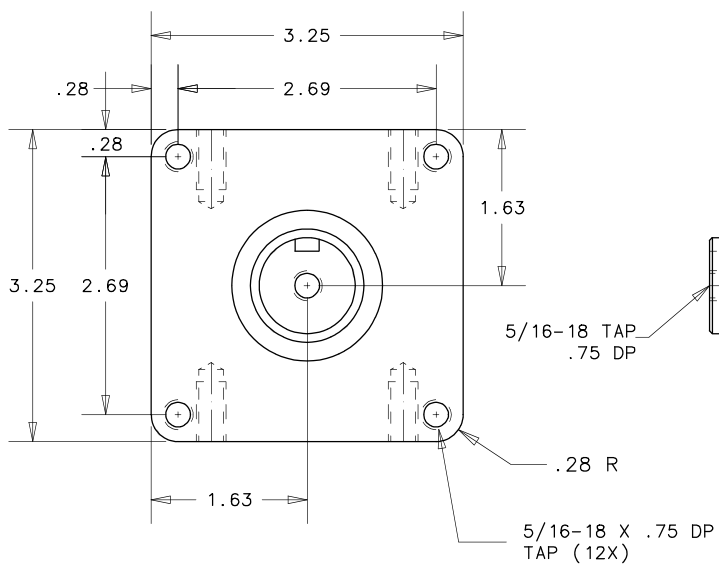
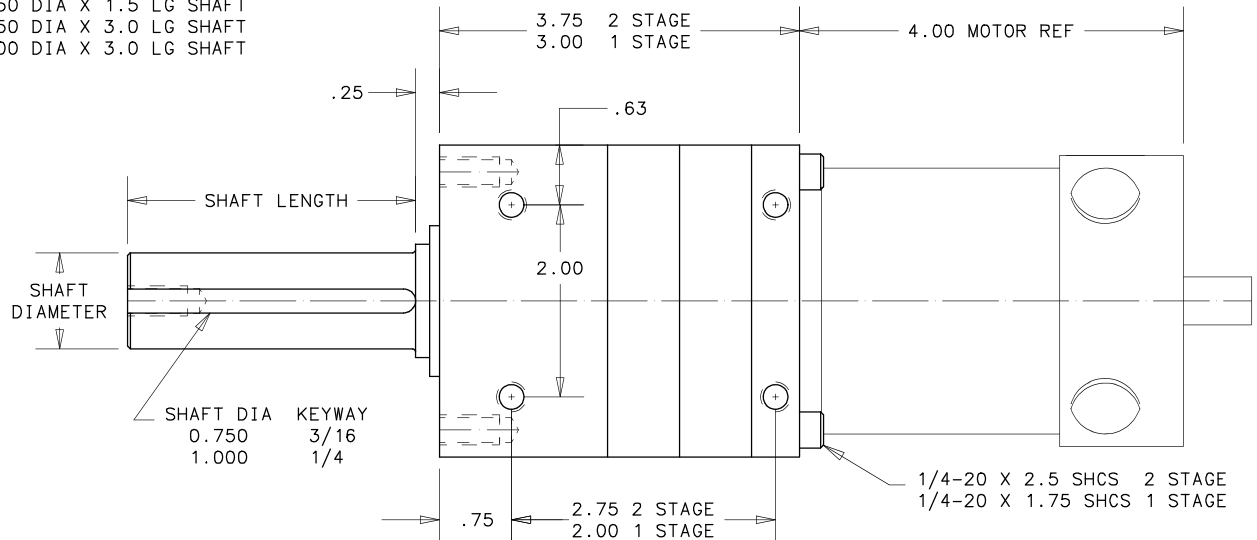
GEARBOX P/N

P3 - "R" - "D"

"D" OUTPUT SHAFT SIZE
 7515 - 0.750 DIA X 1.5 LG SHAFT
 7530 - 0.750 DIA X 3.0 LG SHAFT
 10030 - 1.000 DIA X 3.0 LG SHAFT

"R"	OVERALL RATIO	1ST STAGE	2ND STAGE
3	2.91:1	2.91	NA
4	4.0:1	4.0	NA
8	8.46:1	2.91	2.91
12	11.64:1	2.91	4.0
16	16.0:1	4.0	4.0

TITANIUM OUTPUT SHAFT
 FORTAL/7075 GEARBOX
 STEEL GEARS
 1300 IN LBS MAX TORQUE
 MOTOR NOT INCLUDED



GEARBOX WEIGHT		
RATIO	SHAFT	WEIGHT (LBS)
3 OR 4	7515	3.92
8, 12, 16	7515	5.09

FOR 7530 SHAFT, ADD: 0.10 LBS
 FOR 75100 SHAFT, ADD: 0.26 LBS

LUBRICATION:
 LITHIUM GREASE

- INSTALL MOTOR
- 1) CUT MOTOR SHAFT TO 0.81" LONG
 - 2) REMOVE GEARBOX MOTOR PLATE
 - 3) MOUNT MOTOR TO PLATE
 - 4) SLIDE ON SPACER
 - 5) SLIDE ON PINION AND KEY
 - 6) ATTACH MOTOR PLATE TO GEARBOX

Scale HALF	Dr By TSE	TEAM WHYACHI ROBOTICS	814 E. FIRST AVE. DORCHESTER, WI.	A SIZE	P3	OF	A REV.
Date 1-15-2009	Chk By	TITLE: P3 PLANETARY GEARBOX		FOR: 3" S28 MOTOR		TWR IDENTIFICATION NO.	
THIS DRAWING AND ALL INFORMATION PRESENTED IS THE PROPERTY OF TEAM WHYACHI LLC AND IS STRICTLY CONFIDENTIAL. IT SHALL NOT BE COPIED, REPRODUCED OR REVEALED WITHOUT WRITTEN CONSENT. THIS DRAWING MUST BE RETURNED UPON REQUEST.		TOLERANCE (EXCEPT AS NOTED) .0 _____ .032 .00 _____ .015 .000 _____ .005		QTY.		DESCRIPTION	